



Fire resistant steel door T 30-1-FSA „Teckentrup 42“

Text example:

T 30-1-FSA fire-proof steel door tested in accordance with DIN 4102 (EN 1634-1). Single-leaf door element. Flush-mounted door leaf without hinge stamping. Type of handing DIN right. Door-leaf 42 mm thick, rebated on 3-sides. Corner frame 2.0 mm thick, with 3-sided seal. Door-leaf and frame galvanized and powder-coated (primed) in Grey-white, similar to RAL 9002. Mortice lock with latch lever in accordance with DIN 18250, prepared for profile cylinder. Black plastic round handle set, handle pivoted on bearing, with tumbler insert (Bb) and 1 Bb key. 1 security bolt. 1 spring hinge and 1KO hinge with ball bearings. „Teckentrup 42“ or equivalent.

(Compile and tender according to requirements. Please refer to technical data for respective details. Updated 01.june 2017)

Technical data

| | | | |
|-------------------------------------|--|--|--|
| Building authority approval: | Z-6.20-1956 tested in acc. with EN 1634-1 (DIN 4102) for installation in internal walls Heat transfer coefficient in acc. with EN ISO 12567-1 (without glazing) UD = 1.9 W/m²K | Special equipment | <ul style="list-style-type: none"> ▪ Handle sets/ Lever/ Knob sets: <ul style="list-style-type: none"> - Plastic - Light metal - Stainless steel - with short plate or rose escutcheon (various makes) ▪ prepared for rose escutcheon ▪ Locks: <ul style="list-style-type: none"> - profil cylinder 30,5 + 30,5 mm - panic lock block lock (must be provided) ▪ Panic bar ▪ Top door closer DIN EN 1154 <ul style="list-style-type: none"> - head assembly - with slide rail - with locking device - with smoke detector ▪ For installation in lightweight construction stud walls with top door closer ▪ For installation in autoclaved aerated concrete walls with top door closer ▪ Electric door opener ▪ Integrated lock inspector (bolt contact) ▪ Integrated opening indicator (Reed contact) ▪ Hold-open devices ▪ Floor seals are retrofittable |
| Installation in | <ul style="list-style-type: none"> ▪ Masonry min 115 mm ▪ Concrete min 100 mm ▪ Lightweight construction stud walls min 100 mm <p>* min. ≥ F 30 as per DIN 4102-4 or in accordance with general building authority test certificate refer to installation data details tab.</p> | | |
| Approved dimensions | Modular dimensions: Width: 625 - 1125 mm Height: 1750 - 2250 mm | | |
| Handing | Can be used left / right handed | | |
| Door leaf | Double-skinned, 3 sides: thin rebated Door leaf thickness: 42 mm Sheet thickness: 1 mm Security bolt: mind. 1 Reinforcement: Flat steel Insulation: Mineral fibre board | | |
| Frame | Corner frame 2 mm thick, with 3-sided seal and bottom sill. Frame fixed with 3 screws per side Special equipment: <ul style="list-style-type: none"> ▪ block frame, counter frame or closed frame ▪ with floor recess ▪ Counter frame or closed frame required for installation in lightweight construction stud walls/ autoclaved aerated concrete. | | |
| Surface | Door leaf/Frame galvanized and powder coated (primed) similar to RAL 9002 (Grey-white) | | |
| Hinges, closing devices | <ul style="list-style-type: none"> ▪ 1 Spring hinge ▪ 1 KO hinge with ball bearings ▪ Compensation rings for height adjustment | | |
| Fittings | <ul style="list-style-type: none"> ▪ Mortice lock with latch lever in as per DIN 18250 ▪ black plastic handle set, handle pivoted on bearing, with tumbler insert (Bb) and 1 Bb key Special equipment: ▪ KO hinges with ball bearings and top door closer | | |
| | | Ordering size/ modular dimensions | Clear passage size |
| | | width x height | width x height |
| | | Standard sizes steel door | |
| | | 750 x 2000 | 680 x 1965 |
| | | 2125 | 2090 |
| | | 875 x 1875 | 805 x 1840 |
| | | 2000 | 1965 |
| | | 2125 | 2090 |
| | | 1000 x 2000 | 930 x 1965 |
| | | 2125 | 2090 |
| | | 1125 x 2000 | 1055 x 1965 |
| | | 2125 | 2090 |

(Special sizes: from 625 x 1750 to 1125 x 2250)

Further qualifications (special equipment):



smoke-proof in acc. with DIN 18095 with top door closer for solid walls and construction stud walls

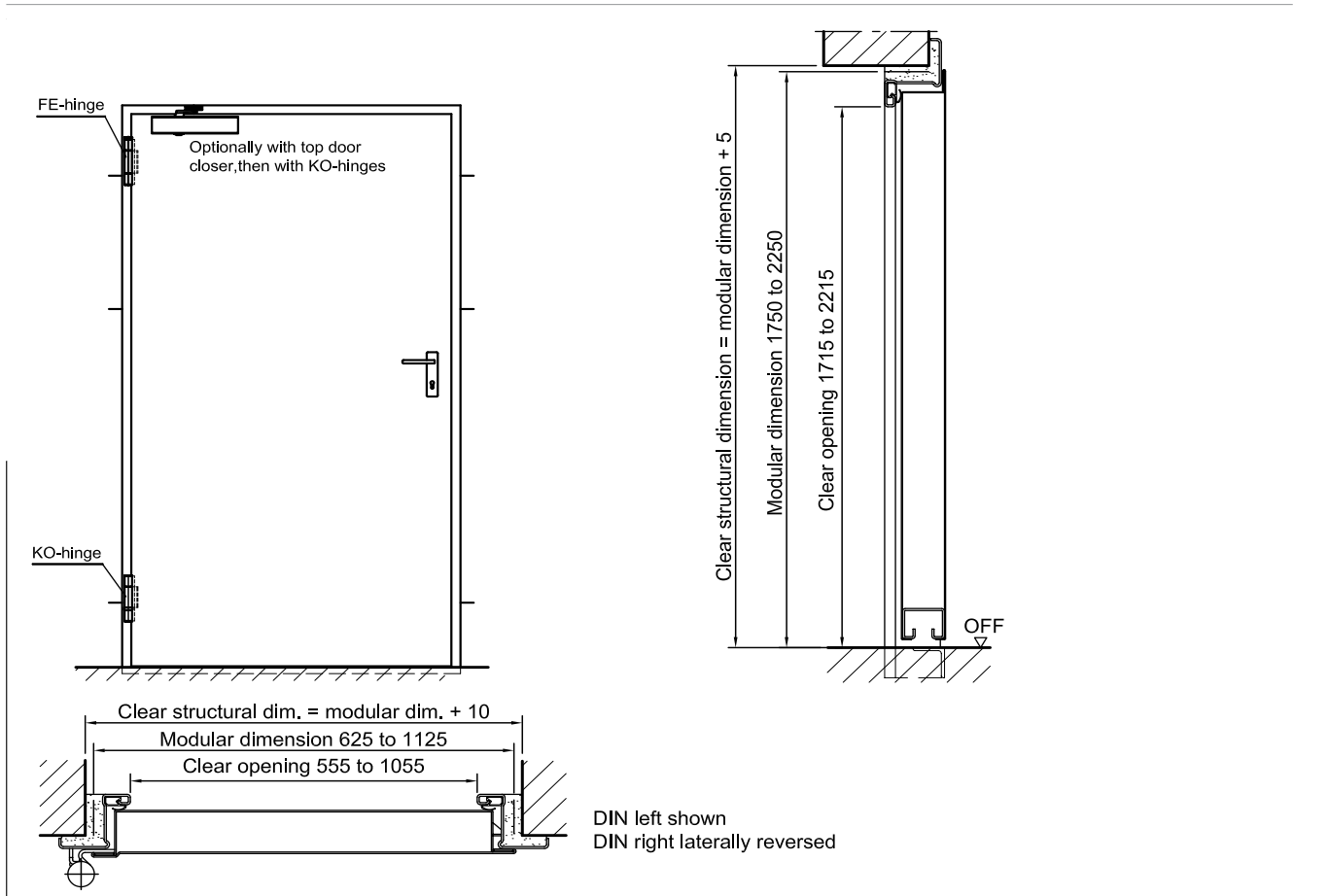


Sound insulated in acc. with DIN EN 20140/717 part1
RW 39dB with bottom buffer (standard)
RW 37dB with sliding threshold seal
RW 37dB mit Schleifdichtung



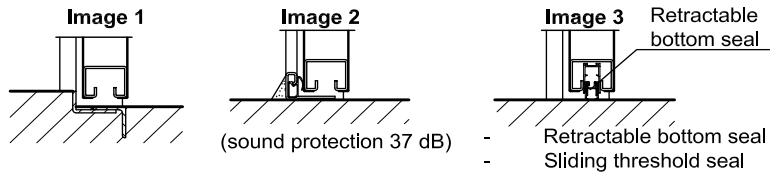
Burglar resistant in acc. with DIN ENV 1627 WK2

Fire resistant steel door
T 30-1-FSA „Teckentrup 42“



Floor connections:

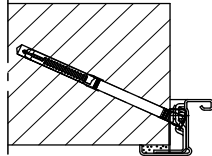
Image 1: With bottom buffer
Image 2: With bottom buffer/seal
Image 3: With bottom seal (smoke-proof door with top door closer)



Installation in masonry/ concrete walls

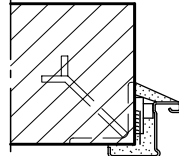
concrete walls ≥ 100 mm
masonry walls ≥ 115 mm

Exposed masonry installation

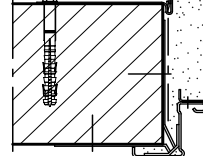


exposed masonry installation as standard

Weld-on assembly

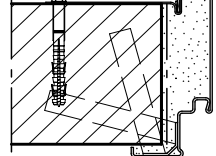


Wall plug assembly



(Corner frame with counter frame)

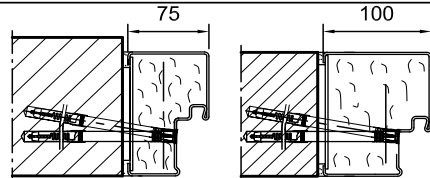
Wall anchor assembly



(Closed frame)

Installation with block frame

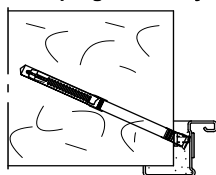
Flush installation between concrete walls ≥ 100 mm
masonry walls ≥ 115 mm



Installation in autoclaved aerated concrete walls

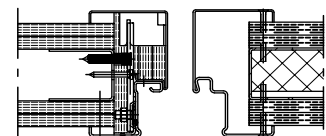
(doors with top door closer). Made of autoclaved aerated concrete blocks or high precision units in acc. with DIN 4165 strength class 4 min. 115 mm or made of reinforced autoclaved aerated concrete slabs strength class 4. Wall thickness ≥ 115 mm

Wall plug assembly



Installation in lightweight construction stud walls

(doors with top door closer) min. F30 in acc. with DIN 4102 Part 4 or in acc. with general building authority test certificate wall thickness min. 88 mm. For permissible walls refer to the Installation details tab.



Corner frame with counter frame

Closed frame